



Project _____

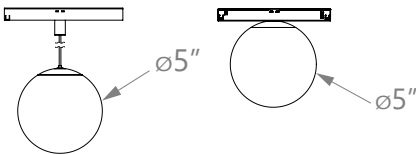
Type _____

Notes _____



● **PERFORMANCE PER UNIT AT 3500K**

FIXTURE	TOTAL LUMEN OUTPUT (lm/unit)	INPUT WATTS (W/unit)	EFFICACY (lm/W)
TDPFGO (Pendant Orb)	1034	22.08	47
TDFFGO (Flush Orb)			



Ordering Guide

PRODUCT ID		TOTAL LUMENS		CRI		COLOR TEMP.		HOUSING & CABLE FINISH		MOUNTING		CONTROLS	
TDPFGO	Track Decorative Pendant Frosted Glass Orb	1000	1000 lm	90	90 CRI	27	2700 K	BLK	black	AXT	Axistrak	DP	integral driver 0-10V dimming (1%)
						30	3000 K	W	white			DALIDT6	integral driver DALI 2.0 Type 6
TDFFGO	Track Decorative Flush Frosted Glass Orb					35	3500 K						
								Cable finish will match housing.					

ADAPTOR FINISH	PENDANT CABLE LENGTH (Only for TDPFGO)
BLK black W white	TLA(L) track length adjustable (Specify cable length between 6" and 140". Actual cable length will be 3" longer than length specified to allow for field adjustment via cable grip.)
Special swag mounting hardware available, such as swag rail and/or swag hooks. See details on page 2. To order other Swag mounting accessories, such as Rails and Hooks, see Swag Accessories for Pendants Spec sheet.	

● CONSTRUCTION

Housing	Cast aluminum
Lens	Frosted glass

● LED SYSTEM

CRI	Minimum 90 color rendering index
CCT	2700K, 3000K, 3500K color temperature with a great color consistency (within 3-step MacAdam ellipse).
LED life	Minimum 50,000h with 85% of lumen maintenance in 25°C ambient temperature, in compliance with IES LM-80 testing measurements.
Thermal Management	Aluminum housing acting as the heat sink to maximize life.

● ELECTRICAL

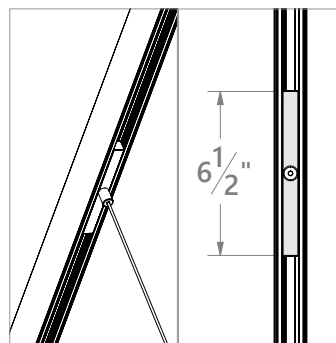
DP	Integral 0-10v 1% dimming low voltage driver (48V)
DALIDT6	Integral Dali 2.0 D4i type 6 low voltage driver (48V)

i Incorporating these components may have limitations or affect the length of the luminaire, please contact factory for more details.

● FINISH

Powder coated matte black and white finishes available.

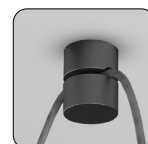
● MOUNTING DIMENSIONS



● SWAG MOUNTING DETAILS



Swag hook shown on rail (TDSR)



Swag hook shown on ceiling (TDSH)

To get more details and order swag mounting hardware please see [Swag Accessories for Pendants Spec sheet](#).

● APPROVALS

Certified to cULus standards.



All Decoratives, Pendants, and Spotlights certified under UL1598.

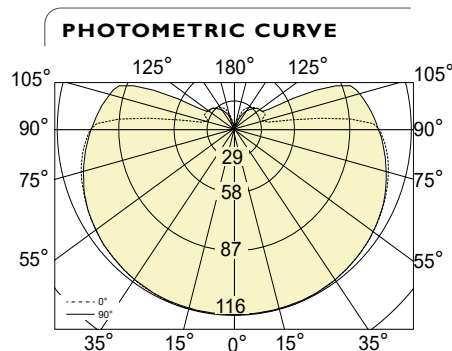
● WARRANTY

Limited 5-year warranty is available. Warranty is valid provided luminaires are installed and used according to specifications. For full terms and conditions, please consult warranty section at axislighting.com.

● PHOTOMETRIC DATA

ORB (Pendant, Flush)

TDxFGO-1000-90-35-W-AXT



Total lumens: 1034 lm
Input Watts: 22.08 W
Efficacy: 47 lm/W

CRI: 90 shown

IES FILE: TDxFGO-1000-90-35-W-AXT.ies
 TESTED ACCORDING TO IES LM-79-2008

CANDELA DISTRIBUTION

Vertical Angle	Horizontal Angles				
	0	22.5	45	67.5	90
0	116	116	116	116	116
5	116	116	116	116	116
15	116	116	116	116	116
25	116	116	116	116	116
35	115	115	115	115	115
45	113	113	113	113	113
55	111	111	110	111	111
65	108	107	107	107	108
75	105	104	103	103	103
85	99	98	98	98	98
90	95	95	95	95	95
95	77	93	92	92	92
105	21	84	86	86	86
115	22	70	77	78	59
125	21	56	66	68	21
135	19	42	53	52	19
145	17	31	39	34	15
155	14	20	24	18	10
165	5	8	11	7	3
175	1	1	1	1	1
180	0	0	0	0	0

ZONAL LUMENS

Zone	Lumens
0	
0-10	11
10-20	33
20-30	53
30-40	72
40-50	87
50-60	99
60-70	107
70-80	109
80-90	107
90	
90-100	98
100-110	82
110-120	66
120-130	47
130-140	32
140-150	19
150-160	9
160-170	2
170-180	0
180	

LUMINANCE DATA (cd/m²)

Vertical Angle	Horizontal Angles		
	0	45	90
45	791371	787502	791699
55	777146	770379	776420
65	756888	748228	755386
75	731196	719897	721133
85	693033	684541	682746

i All IES files are available for download at: www.axislighting.com