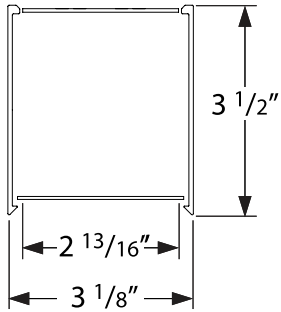
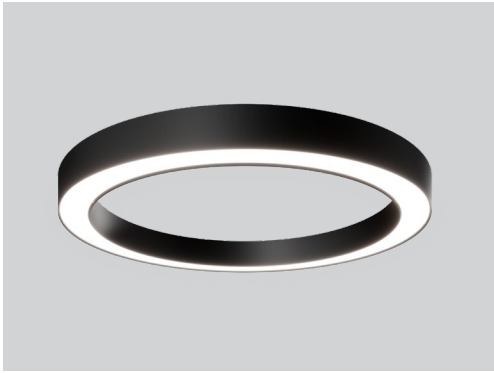


Sketch 3

RING SURFACE



Project _____

Type _____

Notes _____

● PERFORMANCE PER LINEAR FOOT AT 3500K, 90CRI

	NOMINAL LUMEN OUTPUT DIRECT	INPUT WATTS*	EFFICACY
Sketch 3	1300lm/ft	11.18 W/ft	116 lm/W

Please consult factory for other lumen output and wattage.

Ordering Guide



SK3S		PATTERNS AND FORMS		CORRESPONDING TOTAL LENGTH		LUMENS/FT		
PRODUCT ID								
SK3S	Sketch 3 Ring Surface	D(24")	diameter 24"	AL(6' 3 6/16")		300	300 lm/ft - Low	
		D(36")	diameter 36"	AL(9' 5 2/16")				
		D(48")	diameter 48"	AL(13' 6 13/16")		1300	1300 lm/ft - High	
		D(60")	diameter 60"	AL(16' 8 8/16")				
		D(72")	diameter 72"	AL(19' 10 3/16")				
		D(84")	diameter 84"	AL(22' 11 14/16")				
		D(96")	diameter 96"	AL(25' 1 9/16")				
See above for available diameter options. See page 2 for ordering examples.							Outputs between listed are available. Consult factory for outputs outside of the listed range.	

CRI		COLOUR TEMP.		SHIELDING		FINISH		VOLTAGE		DRIVER		
90	high efficacy 90 CRI	27	2700 K	SO	spotless lens	AP	aluminum paint	120	120V	DP	dimming (0-10V) 1% - integral	
		35	3500 K			W	white	277	277V		DALI2	driver DALI 2.0 Type 6 - integral
		30	3000 K			BLK	black	347	347V*		LT(#)	Lutron - remote*
		40	4000 K			C	custom	UNV	universal		O(#)	other - remote**
								DC	low voltage**	O(DMX)	other (Digital Multiplex) - remote**	
								* Remote only. ** Only available with POE drivers.		* Specify system; see page 2. **Please consult factory; see page 2		

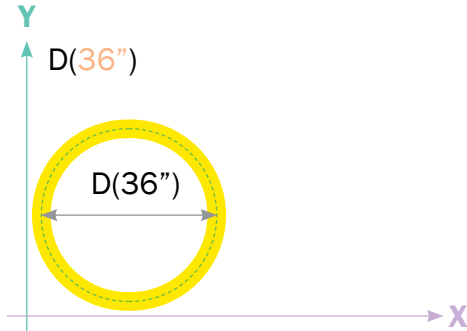
CIRCUITS		MOUNTING		REMOTE BATTERY (OPT.)		CUSTOM (OPT.)	
1	1 circuit	S	surface drywall ceiling	BR(#)	battery pack remote	C	custom
2	2 circuits	SC	surface solid ceiling				
+E(#)	emergency circuit *						
+GTD(#)	generator transfer device * **						
* Specify quantity. ** Remote only.						Please specify	

How to Specify Standard Rings

Note: The center line indicates the diameter at the center of the curve. Regardless to the mounting style, the center line remains the same. This is the dimension that should be used when planning a layout.

Defining Rings - Circular shape

SK3S-D(36")-AL(9' 5 3/32")-500-90-35-SO--W-120-DP-1-S



Note: The number will define the diameter of the circle.

● CONSTRUCTION

Housing	Extruded aluminum (0.075" nominal)
Interior reflectors	Sheet aluminum (20 gauge)
Mounting brkts.	Die cast aluminum (0.10" nominal)
Joining brackets.	Die cast aluminum (0.10" nominal)
Incap & Cross Brkt.	Die cast aluminum (0.10" nominal)

● ELECTRICAL

DP driver	integral DP driver. 0-10V 1% dimming standard.
DALI2 driver	integral DALI driver. DALI 2.0 D4i certified driver.
Lutron driver* (Remote)	LDE1 - EcoSystem H-Series (1%)
Other drivers* (Remote)	DMX - Digital Multiplex Xitanium SR - For wireless sensor *Consult factory
Power over Ethernet POE drivers* (consult factory for more information) UL2108 certified for remote driver	MOLEX IGOR SMARTENGINE O - Other (Consult factory)
Emergency*	Remote emergency battery pack or emergency circuit optional. *Consult factory
Input Voltage	120V, 277V, 347V, UNV, DC.

i Incorporating these components may have limitations or effect the length of the luminaire, please contact factory for more details.

● SHEILDING

Spotless Lens Acrylic (0.06" thick).

● FINISH

Highly reflective, white powder coat finish paint for high efficiency. Matte texture to diffuse glare and lamp image on the surface within the optical chamber exterior. Custom finishes are also available.


● WEIGHT

Approximately 1.75lbs/ft = 0.8kg/ft (linear)

● LED SYSTEM

CRI	High efficacy 90 color rendering index.
CCT Single Color	Choice of 2700K, 3000K, 3500K and 4000K color temperature with a great color consistency (within 3-step MacAdam ellipse). Both within fixture and fixture to fixture.
LED life	Minimum 50,000h with 85% of lumen maintenance in 25°C ambient temperature, in compliance with IES LM-80 testing measurements.
Thermal Management	Aluminum housing acting as the heat sink to maximize life.
Environment	Dry and damp rated in operating ambient temperatures of 0-40°C (32-104F).

● APPROVALS

Certified to CSA standards 
Meets NYC requirements
Suitable for damp locations, indoor only.

● WARRANTY

Axis Lighting will warrant defective LEDs, boards, and drivers for 5 years from date of purchase. Warranty is valid if luminaire is installed and used according to specifications. If defective, Axis will send replacement boards or drivers at no cost along with detailed replacement instructions and instructions on how to return defective components to Axis.

Sketch 3

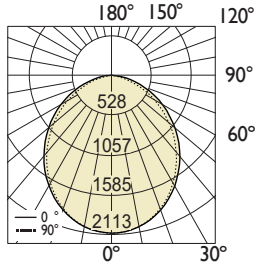
RING SURFACE

● PHOTOMETRIC DATA

SO Spotless lens - Down

Downlight
1300 lm/ft

PHOTOMETRIC CURVE



CANDELA DISTRIBUTION

Vertical Angle	Horizontal Angles				
	0	22.5	45	67.5	90
0	2113	2113	2113	2113	2113
5	2100	2099	2100	2101	2102
15	2004	2001	2001	1996	1996
25	1822	1814	1810	1795	1792
35	1569	1563	1545	1519	1510
45	1276	1264	1240	1201	1191
55	959	946	912	863	849
65	639	620	580	529	513
75	327	306	263	222	208
85	82	61	39	27	25
90	6	6	5	5	5

ZONAL LUMENS

Zone	Lumens
0	
0-10	199
10-20	562
20-30	829
30-40	960
40-50	946
50-60	805
60-70	564
70-80	279
80-90	57
90	

LUMINANCE DATA (cd/m²)

Vertical Angle	Horizontal Angles		
	0	45	90
45	22061	21440	20591
55	20437	19435	18094
65	18498	16770	14836
75	15452	12423	9820
85	11548	5459	3453

Total Lumens: 5201 lm (for 4ft)

Input Watts: 44.71 W

Efficacy: 116 lm/W

IES FILE: SK3S-FF-4-1300-90-35-SO-Preliminary.ies

TESTED ACCORDING TO IES LM-79-2019

i All IES files are available for download at: www.axislighting.com