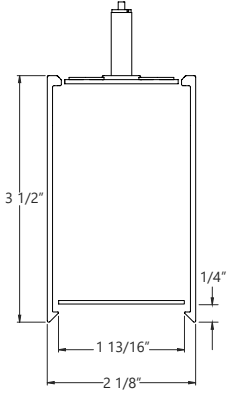
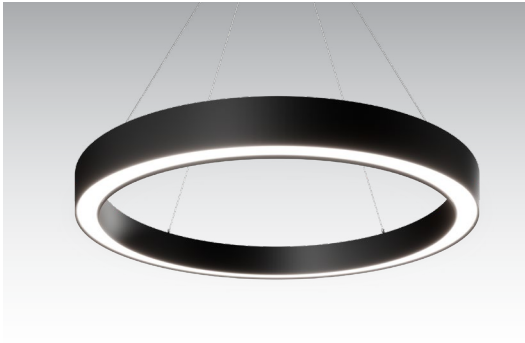


# Sketch 2

# RING PENDANT



Project \_\_\_\_\_

Type \_\_\_\_\_

Notes \_\_\_\_\_

**● PERFORMANCE PER LINEAR FOOT AT 3500K, 90CRI**

	NOMINAL LUMEN OUTPUT INDIRECT	NOMINAL LUMEN OUTPUT DIRECT	INPUT WATTS*	EFFICACY
Sketch 2	1200lm/ft	1100lm/ft	18.65 W/ft	123 lm/W

Please consult factory for other lumen output and wattage.



## Ordering Guide

PRODUCT ID	PATTERNS AND FORMS	CORRESPONDING TOTAL LENGTH	LUMENS/FT INDIRECT (Skip selection for direct only SK2PD.)	LUMENS/FT DIRECT
SK2PDI Sketch 2 Ring Pendant Direct/Indirect	D(24") diameter 24"	AL(6' 3 6/16")	300 300 lm/ft - Low	300 300 lm/ft - Low
	D(36") diameter 36"	AL(9' 5 2/16")	1200 1200 lm/ft - High	1100 1100 lm/ft - High
	D(48") diameter 48"	AL(13' 6 13/16")		
SK2PD Sketch 2 Ring Pendant Direct	D(60") diameter 60"	AL(16' 8 8/16")		
	D(72") diameter 72"	AL(19' 10 3/16")		
	D(84") diameter 84"	AL(22' 11 14/16")		
	D(96") diameter 96"	AL(25' 1 9/16")		
See above for available diameter options. See page 2 for ordering examples.			Outputs between listed are available. Consult factory for outputs outside of the listed range.	

CRI	COLOR TEMP.	SHIELDING INDIRECT (Skip selection for direct only SK2PD.)	SHIELDING DIRECT	FINISH	VOLTAGE	DRIVER
90 high efficacy 90 CRI	27 2700 K 35 3500 K 30 3000 K 40 4000 K	SO spotless lens	SO spotless lens	AP aluminum paint W white BLK black C custom*	120 120V 277 277V UNV universal 347 347V* DC low voltage*	DP dimming (0-10V) 1% - integral DALI2 integral driver DALI 2.0 Type 6 - integral LT(#) Lutron - remote* O(#) other - remote** POE(#) POE drivers - remote*
				<a href="#">*See custom finishes.</a>	* Remote only. ** Only available with POE drivers.	* Specify system; see page 3. **Please consult factory; see page 3

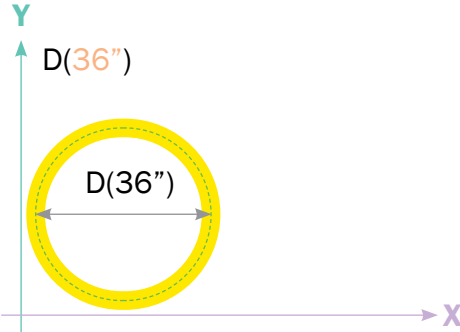
CIRCUITS	MOUNTING/SUSPENSION	MONOPOINT (OPT.)	REMOTE BATTERY (OPT.)	CUSTOM (OPT.)
1 1 circuit 2 2 circuits +E(#) emergency circuit * +GTD(#) generator transfer device ***	CA(#) drywall+cable length (36" std.) CT9(#) TB/TG 9/16+cable length (36" std.) CT15(#) TB/TG15/16+cable length (36" std.) CTS(#) screw slot+cable length (36" std.) CASL(#) drywall cable sloped ceiling	MP Monopoint mounting	BR(#) battery pack remote	C custom
* Specify quantity ** Remote only.	<a href="#">See Mounting kit guide for full specification code.</a> Specify quantity	Only available with 24", 36", 48" diameter rings.		Please specify

### How to Specify Standard Rings

**Note:** The center line indicates the diameter at the center of the curve. Regardless to the mounting style, the center line remains the same. This is the dimension that should be used when planning a layout.

#### Defining Rings - Circular shape

SK2PD-D(36")-AL(9' 5 3/32")-500-500-90-35-SO-SO-W-120-DP-1-CA(36")



**Note:** The number will define the diameter of the circle.

## ● CONSTRUCTION

<b>Housing</b>	Extruded aluminum (0.075" nominal)
<b>Interior reflectors</b>	Sheet aluminum (20 gauge)
<b>Mounting brkts.</b>	Die cast aluminum (0.10" nominal)
<b>Joining brackets.</b>	Die cast aluminum (0.10" nominal)
<b>Incap &amp; Cross Brkt.</b>	Die cast aluminum (0.10" nominal)

## ● ELECTRICAL

<b>DP driver</b>	integral DP driver. 0-10V 1% dimming standard.
<b>DALI2 driver</b>	integral DALI driver. DALI Type 6 standard. DALI 2.0 D4i certified driver.
<b>Lutron driver* (Remote)</b>	LDE1 - EcoSystem H-Series (1%)
<b>Other drivers* (Remote)</b>	DMX - Digital Multiplex Xitanium SR - For wireless sensor *Consult factory
<b>Power over Ethernet POE drivers* (consult factory for more information)</b> UL2108 certified for remote driver	MOLEX IGOR SMARTENGINE O - Other (Consult factory)
<b>Emergency*</b>	Remote emergency battery pack or emergency circuit optional. *Consult factory
<b>Input Voltage</b>	120V, 277V, 347V, UNV, DC.

**i** Incorporating these components may have limitations or effect the length of the luminaire, please contact factory for more details.

## ● SHEILDING

<b>Spotless Lens</b>	Acrylic (0.06" thick).
----------------------	------------------------

## ● FINISH

Highly reflective, white powder coat finish paint for high efficiency. Matte texture to diffuse glare and lamp image on the surface within the optical chamber exterior. Custom finishes are also available.


## ● WEIGHT

Approximately 1.75lbs/ft = 0.8kg/ft (linear)

## ● LED SYSTEM

<b>CRI</b>	High efficacy 90 color rendering index.
<b>CCT Single Color</b>	Choice of 2700K, 3000K, 3500K and 4000K color temperature with a great color consistency (within 3-step MacAdam ellipse). Both within fixture and fixture to fixture.
<b>LED life</b>	Minimum 50,000h with 85% of lumen maintenance in 25°C ambient temperature, in compliance with IES LM-80 testing measurements.
<b>Thermal Management</b>	Aluminum housing acting as the heat sink to maximize life.
<b>Environment</b>	Dry and damp rated in operating ambient temperatures of 0-40°C (32-104F).

## ● APPROVALS

Certified to CSA standards   
Meets NYC requirements  
Suitable for damp locations, indoor only.

## ● WARRANTY

Axis Lighting will warrant defective LEDs, boards, and drivers for 5 years from date of purchase. Warranty is valid if luminaire is installed and used according to specifications. If defective, Axis will send replacement boards or drivers at no cost along with detailed replacement instructions and instructions on how to return defective components to Axis.

# Sketch 2

## RING PENDANT

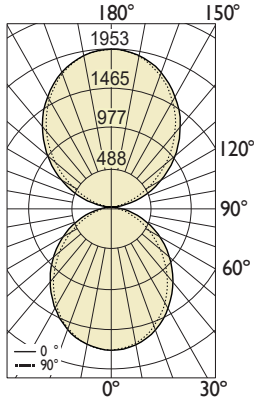
### ● PHOTOMETRIC DATA

**SO** Spotless lens - **Up**  
**SO** Spotless lens - **Down**

Uplight  
**1200 lm/ft**

Downlight  
**1100 lm/ft**

#### PHOTOMETRIC CURVE



**Lumen up: 4801lm**  
**Lumen down: 4402 lm**  
**Total Lumens: 9204 lm (for 4ft)**  
**Input Watts: 74.6 W**  
**Efficacy: 123 lm/W**

IES FILE: SK2PDI-FF-4'-1200-1100-90-35-SO-SO.ies

TESTED ACCORDING TO IES LM-79-2019

#### CANDELA DISTRIBUTION

Vertical Angle	Horizontal Angles				
	0	22.5	45	67.5	90
0	1830	1830	1830	1830	1830
5	1824	1817	1816	1809	1811
15	1739	1728	1720	1704	1704
25	1582	1557	1536	1515	1507
35	1355	1330	1304	1264	1254
45	1101	1073	1038	977	956
55	830	802	741	674	660
65	552	518	454	395	380
75	288	243	193	151	143
85	71	38	19	14	14
90	11	11	11	10	9
95	77	50	35	33	35
105	316	277	223	187	180
115	606	568	507	444	431
125	904	869	823	760	746
135	1194	1164	1129	1084	1073
145	1468	1439	1411	1387	1382
155	1686	1672	1663	1643	1645
165	1857	1844	1838	1829	1833
175	1940	1934	1934	1937	1940
180	1952	1952	1952	1952	1952

#### ZONAL LUMENS

Zone	Lumens
0	
0-10	172
10-20	486
20-30	712
30-40	819
40-50	802
50-60	673
60-70	466
70-80	227
80-90	45
90	
90-100	55
100-110	256
110-120	514
120-130	740
130-140	876
140-150	889
150-160	767
160-170	520
170-180	184
180	0

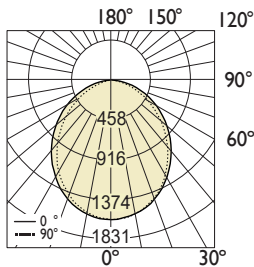
#### LUMINANCE DATA (cd/m<sup>2</sup>)

Vertical Angle	Horizontal Angles		
	0	45	90
45	25408	23959	22065
55	23612	21072	18775
65	21313	17524	14662
75	18139	12140	9006
85	13344	3503	2604

**SO** Spotless lens - **Down**

**1100 lm/ft**

#### PHOTOMETRIC CURVE



**Total Lumens: 4401 lm (for 4ft)**  
**Input Watts: 39.4 W**  
**Efficacy: 112 lm/W**

IES FILE: SK2PD-FF-4'-1100-90-35-SO.ies

TESTED ACCORDING TO IES LM-79-2019

#### CANDELA DISTRIBUTION

Vertical Angle	Horizontal Angles				
	0	22.5	45	67.5	90
0	1830	1830	1830	1830	1830
5	1824	1817	1816	1809	1811
15	1739	1728	1720	1704	1704
25	1582	1557	1536	1515	1507
35	1355	1330	1304	1264	1254
45	1101	1073	1038	977	956
55	830	802	741	674	660
65	552	518	454	395	380
75	288	243	193	151	143
85	71	38	19	14	14
90	5	5	4	4	4

#### ZONAL LUMENS

Zone	Lumens
0	
0-10	172
10-20	486
20-30	712
30-40	819
40-50	802
50-60	673
60-70	466
70-80	227
80-90	44
90	

#### LUMINANCE DATA (cd/m<sup>2</sup>)

Vertical Angle	Horizontal Angles		
	0	45	90
45	25408	23959	22065
55	23612	21072	18775
65	21313	17524	14662
75	18139	12140	9006
85	13344	3503	2604

**i** All IES files are available for download at: [www.axislighting.com](http://www.axislighting.com)