

Project \_\_\_\_\_

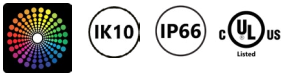
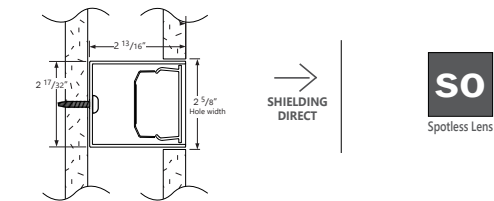
Type \_\_\_\_\_

Notes \_\_\_\_\_

PERFORMANCE PER LINEAR FOOT

NOMINAL LUMEN OUTPUT	INPUT WATTS*	EFFICACY	SHIELDING
1000 lm/ft	16.4 W/ft	61 lm/W	SO

\*Please consult factory for custom lumen output and wattage.



Ordering Guide

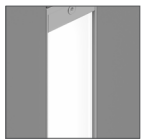
EX2R									
PRODUCT ID	NOM. LUM/FT	CRI		COLOR TEMP.		SHIELDING	LENGTH (FT)	FINISH	
EX2R Extend 2 Vertical Recessed	1000 1000 lm/ft	90	90 CRI	CTRGBW30	RGB+30K White - Color Tuning	SO spotless lens	4 4'	AP	aluminum paint
				CTRGBW35	RGB+35K White - Color Tuning		5 5'	W	white
				CTRGBW40	RGB+40K White - Color Tuning		6 6'	BLK	black
							7 7'	C	custom
							8 8'		
							12 12'		
							S(L) System Run		
							3" increments are available for lengths over 4 feet.		

CT(DMX)		SBV			
VOLTAGE	DRIVER	CIRCUITS	MOUNTING	OTHER (OPTIONAL)	CUSTOM(OPT.)
120 120 V	CT(DMX) color tuning driver	1 1 circuit	DFV Vertical Flange	+TF top feed*	C custom
277 277 V		+E( # ) emergency circuit*	DV Vertical flangeless	+EF end feed*	
UNV universal			DSV Vertical drywall spackle flange	+N natatorium finish	
		*Specify quantity. Minimum 3ft fixture length.		7/8" diameter top power feed hole provided standard. See page 3 for more details. *Comes with liquid tight connector and 10ft of plenum rated power cable.	Please specify

## CONSTRUCTION

<b>Housing</b>	Extruded aluminum (0.08" nominal) Up to 70% recycled content
<b>End Cap</b>	Cast aluminum
<b>Interior Brackets</b>	Die formed sheet steel (18 gauge)
<b>Gaskets</b>	Silicone rubber
<b>Lens Gaskets</b>	Extruded elastomer
<b>Lens</b>	Extruded acrylic
<b>Fasteners</b>	All external fasteners are tamper proof TORX T20

## OPTICS

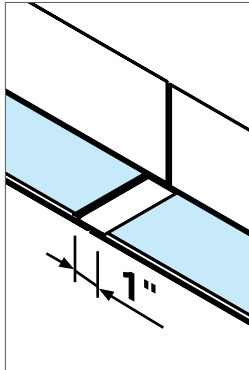


SO Spotless lens;

Impact modified PMMA lens used.

## SYSTEM (S(L))

Lengths of 4'-12' standalone are available. Runs of EXTEND2 that are greater than 12' in length are designated as systems (S(L)). System runs are comprised of a combination of 4' to 8' sections to be assembled on site using our joining system which includes a 1" sealed joiner plate. For more information on systems and joining, please refer to the EXTEND2 installation sheets available for download at [www.axislighting.com](http://www.axislighting.com).



## WEIGHT

<b>4 ft</b>	8 lbs / 3.6 kg
<b>8 ft</b>	16 lbs / 7.2 kg
<b>12 ft</b>	24 lbs / 10.8 kg

## FINISH

Powder coated, custom finishes are available.

## OTHER MOUNTING OPTIONS

EXTEND 2 is also available with pendant, surface and wall mounted options.

- i** Specification sheets and installation sheets for all mountings for EXTEND 2 luminaires are available for download at [www.axislighting.com](http://www.axislighting.com)

## ELECTRICAL

<b>Color Tuning CT driver</b>	DMX - Standard
<b>Emergency</b>	Emergency circuit optional.
<b>Input Voltage</b>	120V, 277V, UNV.

- i** Incorporating these components may have limitations or affect the length of the luminaire. Please contact factory for more details.

## LED SYSTEM

<b>CRI</b>	90 color rendering index.
<b>CRI Color Tuning</b>	90 CRI for CTRGBW. <b>Note: RGB+W allows you to select the 'white point' (CCT) + CRI, delivering a more flexible and powerful white than standard RGBW.</b>
<b>CCT Color Tuning</b>	30 (3000K) 35 (3500K) 40 (4000K)
<b>LED life</b>	Minimum 50,000h with 85% of lumen maintenance in 25°C ambient temperature, in compliance with IES LM-80 testing measurements.
<b>Thermal Management</b>	Aluminum housing acting as the heat sink to maximize life.
<b>Environment</b>	Dry and wet location rated IP66 for outdoor or indoor use. Impact resistant rated IK10.

## APPROVALS

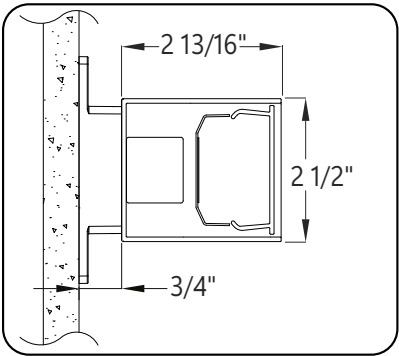
Certified wet locations to UL and CUL standards. IP66 and IK10 rated.

## WARRANTY

Limited 5-year warranty is available. Warranty is valid provided luminaires are installed and used according to specifications. For full terms and conditions, please consult warranty section at [axislighting.com](http://axislighting.com).

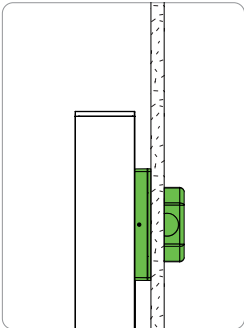
SECTION VIEWS

SBV Surface bracket vertical



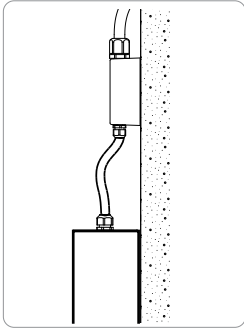
SO Spotless lens

POWER FEED



WIRING THROUGH BRACKET

STANDARD



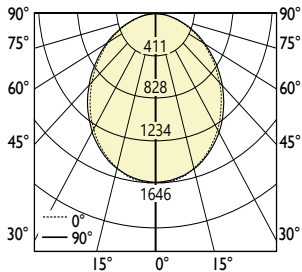
EF END FEED

OPTIONAL

● PHOTOMETRIC DATA

SO - Spotless lens  
1000 lm/ft

PHOTOMETRIC CURVE



Lumen/ft: 1000 lm/ft  
Total Lumens: 4000 lm (for 4ft)  
Input Watts: 65.41 W  
Efficacy: 61 lm/W  
IES FILE: EX2xx-1000-90-CTRGBW30-SO-4.ies  
TESTED ACCORDING TO IES LM-79-2019

CANDELA DISTRIBUTION

Vertical Angle	Horizontal Angles				
	0	22.5	45	67.5	90
0	1646	1646	1646	1646	1646
5	1634	1628	1630	1627	1633
15	1546	1540	1538	1534	1533
25	1383	1377	1372	1361	1360
35	1170	1165	1155	1139	1139
45	932	928	920	902	901
55	691	685	680	661	660
65	453	447	442	427	423
75	225	222	216	204	203
85	45	43	40	33	33
90	3	3	3	3	3

ZONAL LUMENS

Zone	Lumens
0	
0-10	155
10-20	434
20-30	633
30-40	725
40-50	712
50-60	611
60-70	441
70-80	235
80-90	55
90	

LUMINANCE DATA (cd/m²)

Vertical Angle	Horizontal Angles		
	0	45	90
45	37266	36808	36045
55	34040	33539	32522
65	30318	29548	28317
75	24629	23651	22226
85	14481	12871	10860

**i** All IES files are available for download at: [www.axislighting.com](http://www.axislighting.com)