

**Project** \_\_\_\_\_

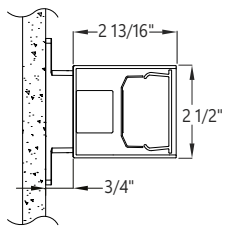
**Type** \_\_\_\_\_

**Notes** \_\_\_\_\_

## PERFORMANCE PER LINEAR FOOT AT 3500K, 80 CRI

NOMINAL LUMEN OUTPUT	INPUT WATTS*	EFFICACY	SHIELDING
1000 lm/ft	9.8 W/ft	101 lm/W	SO

\*Please consult factory for custom lumen output and wattage.



## Ordering Guide

EX2S									
PRODUCT ID		NOM. LUM/FT		CRI		COLOR TEMP. (choose one)		SHIELDING	
EX2S	Extend 2 Surface Vertical	300	300 lm/ft - min	80	80 CRI	27	2700 K	SO	spotless lens
		1000	1000 lm/ft - max	90	90 CRI	30	3000 K		
						35	3500 K		
						40	4000 K		
						50	5000 K		
		Consult factory for outputs outside of the listed range.							

LENGTH (FT)		FINISH		VOLTAGE		DRIVER		CIRCUITS	
2	2'	AP	aluminum paint	120	120 V	DP	dimming (0-10V) 1%	1	1 circuit
3	3'	W	white	277	277 V	DPX	dimming (0-10V) 1%, extended temp. range (-40°C - +50°C)	2	2 circuits
4	4'	BLK	black	347	347 V*	LT(#)	Lutron*	+E(#)	emergency circuit*
5	5'	C	custom	UNV	universal	BI	bi-level dimming	+NL(#)	night light circuit*
6	6'					O(#)	other*	+GTD(#)	generator transfer device* **
7	7'								
8	8'								
12	12'								
S(L) System Run									
Lengths are nominal. Exact lengths can be specified, please consult factory.				*Remote surge protection device only		*Please consult factory; see page 2.		*Specify quantity. Minimum 3ft fixture length. **120V and 277V only. Please specify.	

MOUNTING		BATTERY (OPTIONAL)		IC CONTROLS (OPT.)		OTHER (OPTIONAL)		CUSTOM (OPTIONAL)	
SBV	surface bracket vertical	B(#)	battery pack (integral)*	OS(#)	occupancy sensor	+EF	end feed	C	custom
		BR(#)	battery pack (remote)**	DOS(#)	daylight & occupancy sensor	+N	natatorium finish		
		*Minimum 3ft; **Dry/Damp location only. Please consult factory.		Specify quantity. Requires 8" blank. <a href="#">See integrated controls guide for more details.</a>		See page 3 for more details.		Please specify	

## CONSTRUCTION

<b>Housing</b>	Extruded aluminum (0.08" nominal) Up to 70% recycled content
<b>End Cap</b>	Cast aluminum
<b>Interior Brackets</b>	Die formed sheet steel (18 gauge)
<b>Gaskets</b>	Silicone rubber
<b>Lens Gaskets</b>	Extruded elastomer
<b>Lens</b>	Extruded acrylic
<b>Fasteners</b>	All external fasteners are tamper proof TORX T20

## OPTICS



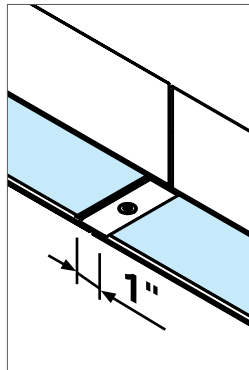
SO

Spotless lens;

Impact modified PMMA lens used for all shielding options.

## SYSTEM (S(L))

Lengths of 2'-12' standalone are available. Runs of EXTEND2 that are greater than 12' in length are designated as systems (S(L)). System runs are comprised of a combination of 4' to 8' sections to be assembled on site using our joining system which includes a 1" sealed joiner plate. For more information on systems and joining, please refer to the EXTEND2 installation sheets available for download at [www.axislighting.com](http://www.axislighting.com).



## WEIGHT

<b>4 ft</b>	7 lbs / 3.2 kg
<b>8 ft</b>	14 lbs / 6.4 kg
<b>12 ft</b>	21 lbs / 9.6 kg

## FINISH

Powder coated, custom finishes are available.

## OTHER MOUNTING OPTIONS

EXTEND 2 is also available with pendant, wall and recessed mount options.

- Specification sheets and installation sheets for all mountings for EXTEND 2 luminaires are available for download at [www.axislighting.com](http://www.axislighting.com)

## ELECTRICAL

<b>DP</b>	0-10V dimming driver. Ambient operating temperature -30°C - +40°C
<b>DPX</b>	0-10V dimming driver with extended temperature range (-40°C - +50°C)
<b>Lutron driver</b>	LDE1 - Hi-lume 1% EcoSystem with Soft-on, Fade-to-Black (min ambient operating temperature - 0°C (32°F).
<b>Other drivers</b>	DALI* - Digital Addressable Lighting Interface DMX* - Digital Multiplex Xitanium SR* - For wireless sensor
Choose driver from available options. * Ambient operating range: -20°C - +40°C	

<b>Emergency</b>	B(#) Integral Emergency Battery pack, 3ft minimum. Operating temperature (-20° to 50°C) for 120V to 277V; (0°C to 50°C) for 347V BR(#) Remote emergency battery pack operating temperature range (-20°C- +50°C) for 120V to 277V; (0°C - +50°C) for 347V.
<b>Input Voltage</b>	120V, 277V, 347V, UNV.

**Surge Protection** Extend comes standard with surge protection device.

- Incorporating these components may have limitations or affect the length of the luminaire. Please contact factory for more details.

## LED SYSTEM

<b>CRI</b>	Minimum 80 or 90 color rendering index.
<b>CCT Single Color</b>	Choice of 2700K, 3000K, 3500K, 4000K and 5000K color temperature with a great color consistency (within 3-step MacAdam ellipse). Both within fixture and fixture to fixture.
<b>LED life</b>	Minimum 50,000h with 85% of lumen maintenance in 25°C ambient temperature, in compliance with IES LM-80 testing measurements.
<b>Thermal Management</b>	Aluminum housing acting as the heat sink to maximize life.
<b>Environment</b>	Dry and wet location rated IP66 for outdoor or indoor use. Impact resistant rated IK10.

## APPROVALS

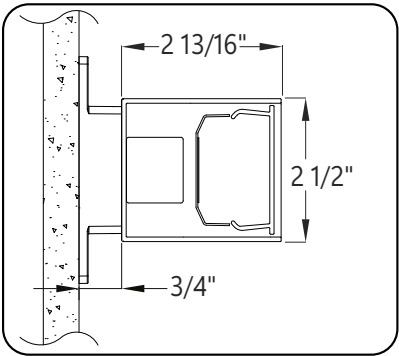
Certified wet locations to UL and CUL standards. IP66 and IK10 rated.

## WARRANTY

Limited 5-year warranty is available. Warranty is valid provided luminaires are installed and used according to specifications. For full terms and conditions, please consult warranty section at [axislighting.com](http://axislighting.com).

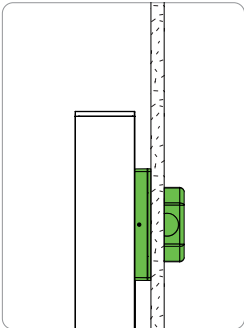
SECTION VIEWS

SBV Surface bracket vertical



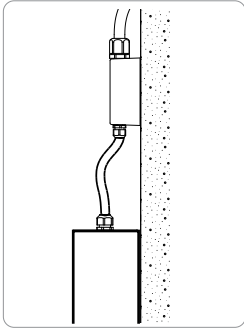
SO Spotless lens

POWER FEED



WIRING THROUGH BRACKET

STANDARD



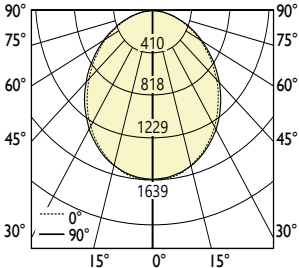
EF END FEED

OPTIONAL

● PHOTOMETRIC DATA

SO - Spotless lens  
1000 lm/ft

PHOTOMETRIC CURVE



Lumen/ft: 1000 lm/ft  
Total Lumens: 3982 lm (for 4ft)  
Input Watts: 39.5 W  
Efficacy: 101 lm/W  
IES FILE: EX2S-1000-80-35-SO-4.IES

TESTED ACCORDING TO IES LM-79-2019

CANDELA DISTRIBUTION

Vertical Angle	Horizontal Angles				
	0	22.5	45	67.5	90
0	1639	1639	1639	1639	1639
5	1626	1621	1622	1620	1626
15	1539	1533	1532	1527	1526
25	1377	1370	1366	1355	1354
35	1165	1159	1150	1134	1134
45	928	923	916	898	897
55	687	682	677	658	657
65	451	445	440	425	421
75	224	221	216	203	203
85	44	43	39	33	33
90	3	3	3	3	3

ZONAL LUMENS

Zone	Lumens
0	
0-10	154
10-20	432
20-30	630
30-40	722
40-50	709
50-60	608
60-70	439
70-80	233
80-90	54
90	

LUMINANCE DATA (cd/m²)

Vertical Angle	Horizontal Angles		
	0	45	90
45	37100	36644	35884
55	33888	33389	32377
65	30182	29417	28191
75	24519	23546	22127
85	14416	12814	10812

**i** All IES files are available for download at: [www.axislighting.com](http://www.axislighting.com)